

Схема для вышивания крестом

Каталог: igolki.net

Код схемы: kshakijjna

Название: Венеция

Оттенков: 81

Размер: 208x250 стежков.

Разбивка схемы: 6x5 страниц

Версия процессора: 0.2.0

Дата создания: 26.11.2009



Карта цветов (DMC)

 310 - black (2685)	 939 - navy blue vy dk (2565)	 823 - navy blue dk (1316)
 938 - coffee brown ul dk (847)	 3371 - brown black (344)	 890 - pistachio green ul dk (182)
 3799 - pewter gray vy dk (829)	 898 - coffee brown vy dk (266)	 336 - navy blue (1265)
 814 - garnet dk (717)	 311 - navy blue md (395)	 796 - royal blue dk (386)
 3750 - antique blue vy dk (465)	 815 - garnet md (495)	 154 - grape vy lt (470)
 902 - gamet vy dk (126)	 3021 - brown gray vy dk (187)	 3857 - rosewood dk (378)
 816 - garnet (306)	 918 - red copper dk (874)	 824 - blue vy dk (696)
 561 - jade vy dk (153)	 3842 - wedgewood dk (525)	 433 - brown md (99)
 3802 - antique mauve vy dk (141)	 797 - royal blue (1393)	 158 - cornflower blue md vy dk (447)
 779 - cocoa dk (654)	 817 - coral vy dk (446)	 312 - navy blue lt (133)
 919 - red copper (489)	 930 - antique blue dk (348)	 3837 - lavender blue ul dk (221)
 900 - burnt orange dk (787)	 434 - brown lt (458)	 825 - blue dk (751)
 347 - salmon vy dk (85)	 333 - blue violet vy dk (281)	 798 - delft blue dk (1284)
 920 - copper md (1363)	 606 - orange-red br (568)	 3721 - shell pink dk (394)
 322 - baby blue dk (491)	 3826 - golden brown (871)	 451 - shell gray dk (509)
 3760 - wedgewood (1982)	 3860 - cocoa (510)	 208 - lavender vy dk (203)
 3835 - grape md (298)	 3746 - blue violet dk (532)	 3772 - desert sand vy dk (769)
 414 - steel gray dk (188)	 169 - pewter gray lt (421)	 647 - beaver gray md (409)
 977 - golden brown lt (1407)	 318 - steel gray lt (1044)	 3846 - bright turquoise lt (913)
 422 - hazel nut brown lt (720)	 471 - avocado green vy lt (91)	 809 - delft blue (2272)
 642 - beige gray dk (894)	 725 - topaz (1954)	 523 - fern green lt (152)
 734 - olive green lt (78)	 3752 - antique blue vy lt (699)	 676 - old gold lt (578)
 524 - fern green vy lt (218)	 726 - topaz lt (270)	 743 - yellow md (239)
 613 - drab brown vy lt (714)	 3761 - sky blue lt (495)	 341 - blue violet lt (531)
 800 - delft blue pl (300)	 3855 - autumn gold lt (963)	 739 - tan vy lt (351)
 3033 - mocha brown vy lt (358)	 3811 - turquoise vy lt (425)	 677 - old gold vy lt (310)
 951 - tawny lt (444)	 775 - baby blue vy lt (890)	 ecru - ecru (693)

	0	10	20	30	40	
0						
10						
20						
30						
40						
50						
	0	10	20	30	40	

40 50 60 70 80

0

10

20

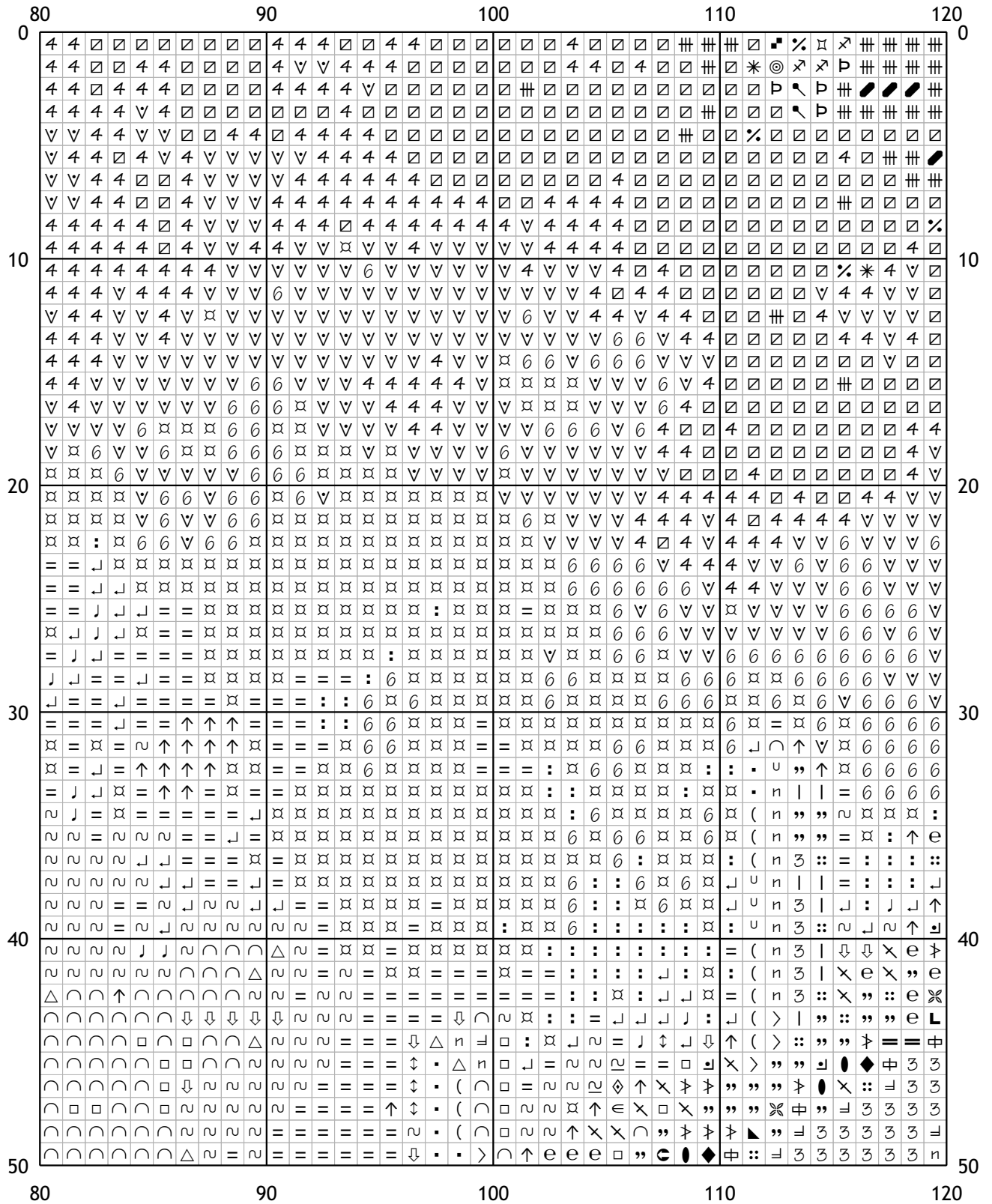
30

40

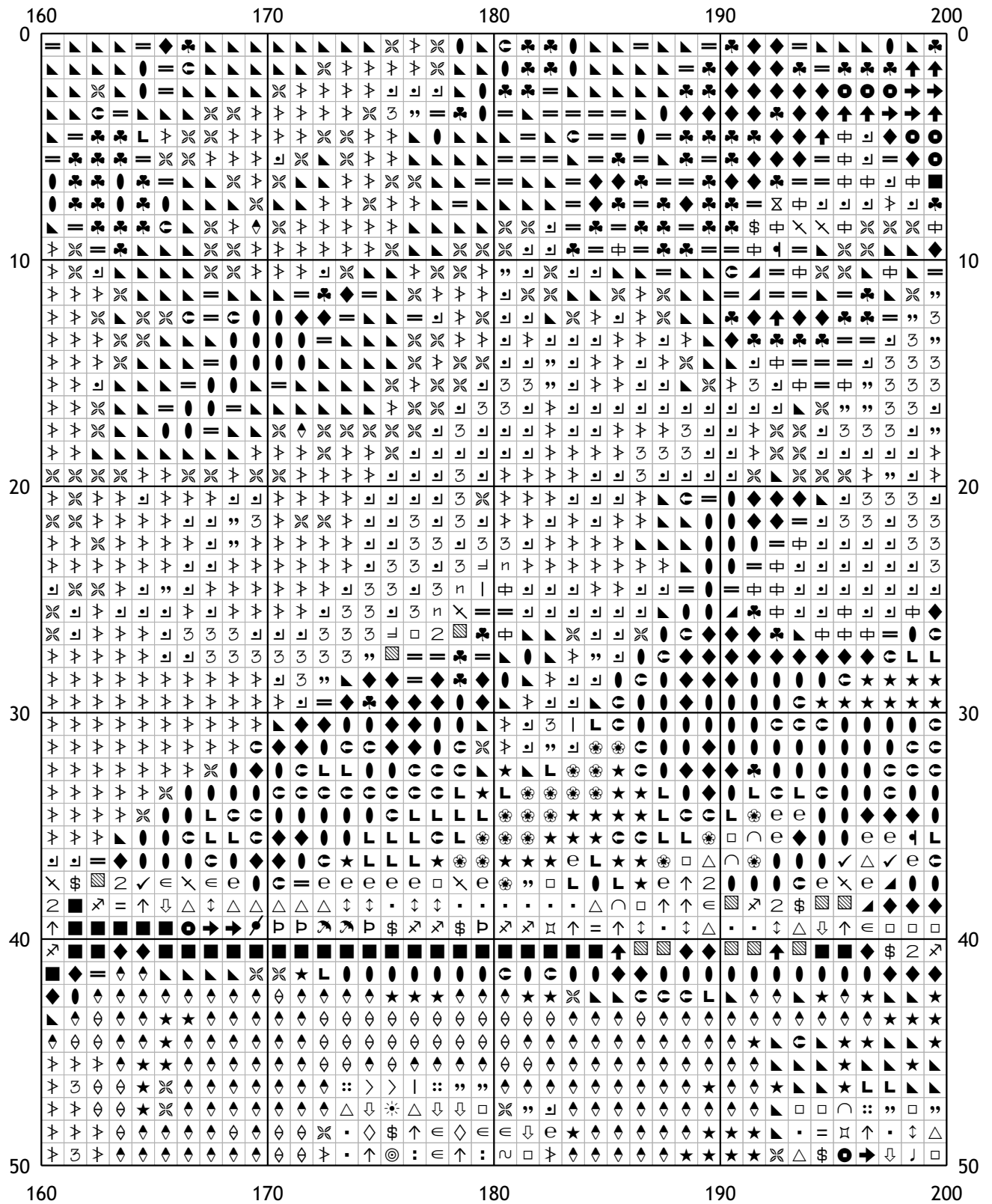
50

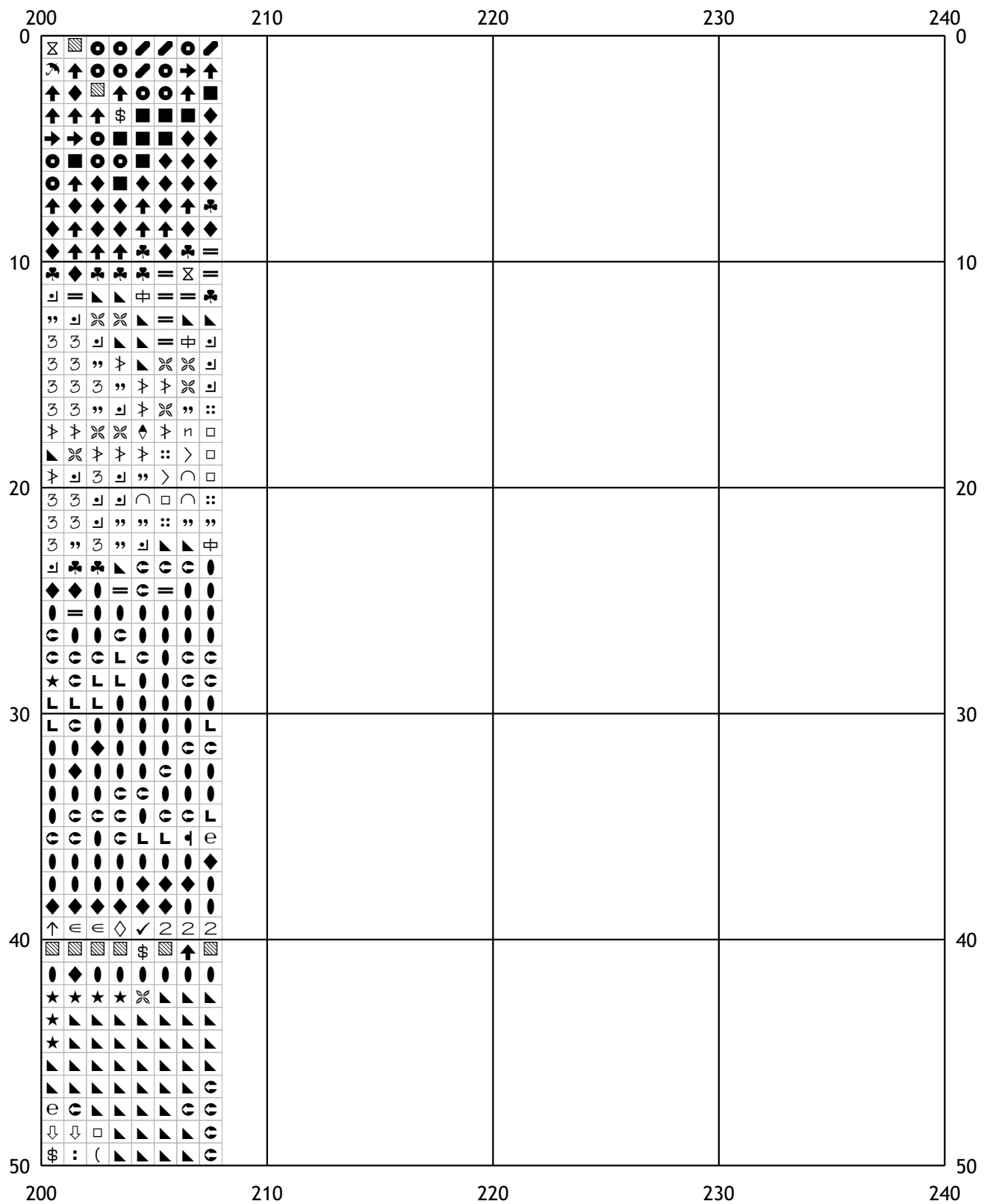
40 50 60 70 80

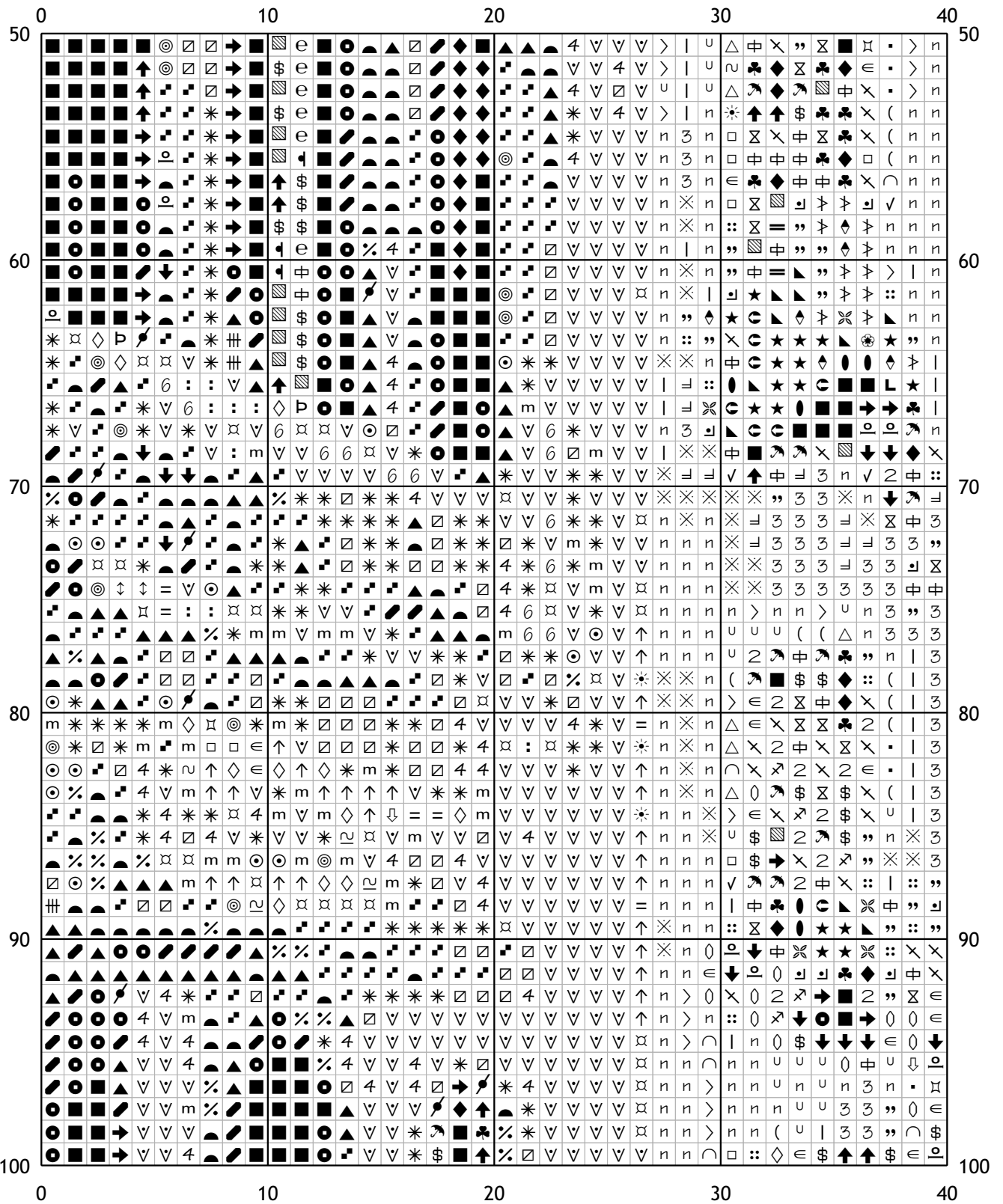
A large grid for cross-stitching, numbered 0 to 50 on both the left and right sides, and 40 to 80 on the top and bottom. The grid contains a variety of symbols including letters (A-Z), numbers (0-9), punctuation marks (., : ; , =), geometric shapes (circles, squares, triangles, diamonds), and arrows. The symbols are arranged in a complex, repeating pattern across the grid.



	120	130	140	150	160	
0	0	0	0	0	0	0
10	10	10	10	10	10	10
20	20	20	20	20	20	20
30	30	30	30	30	30	30
40	40	40	40	40	40	40
50	50	50	50	50	50	50
	120	130	140	150	160	

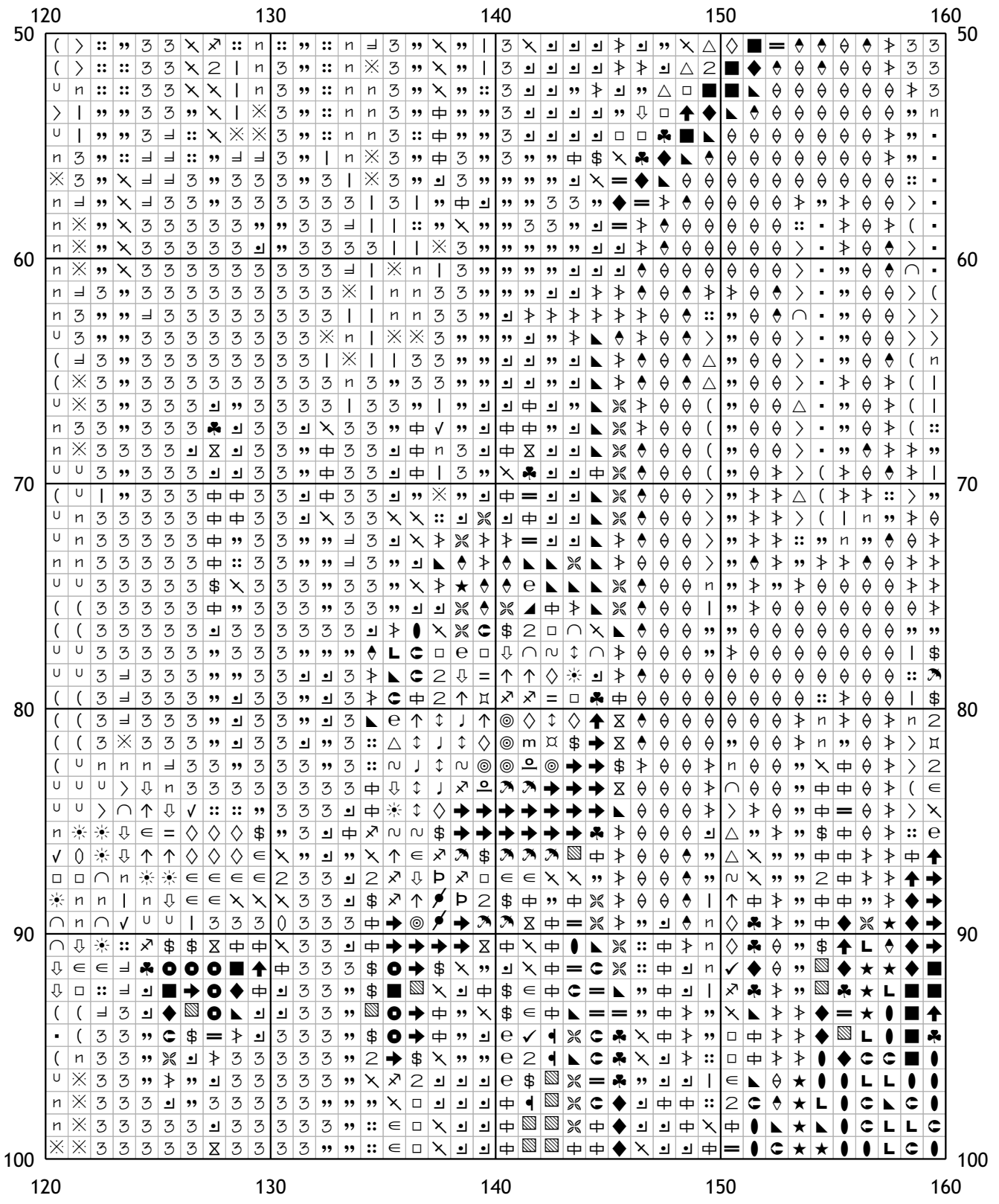


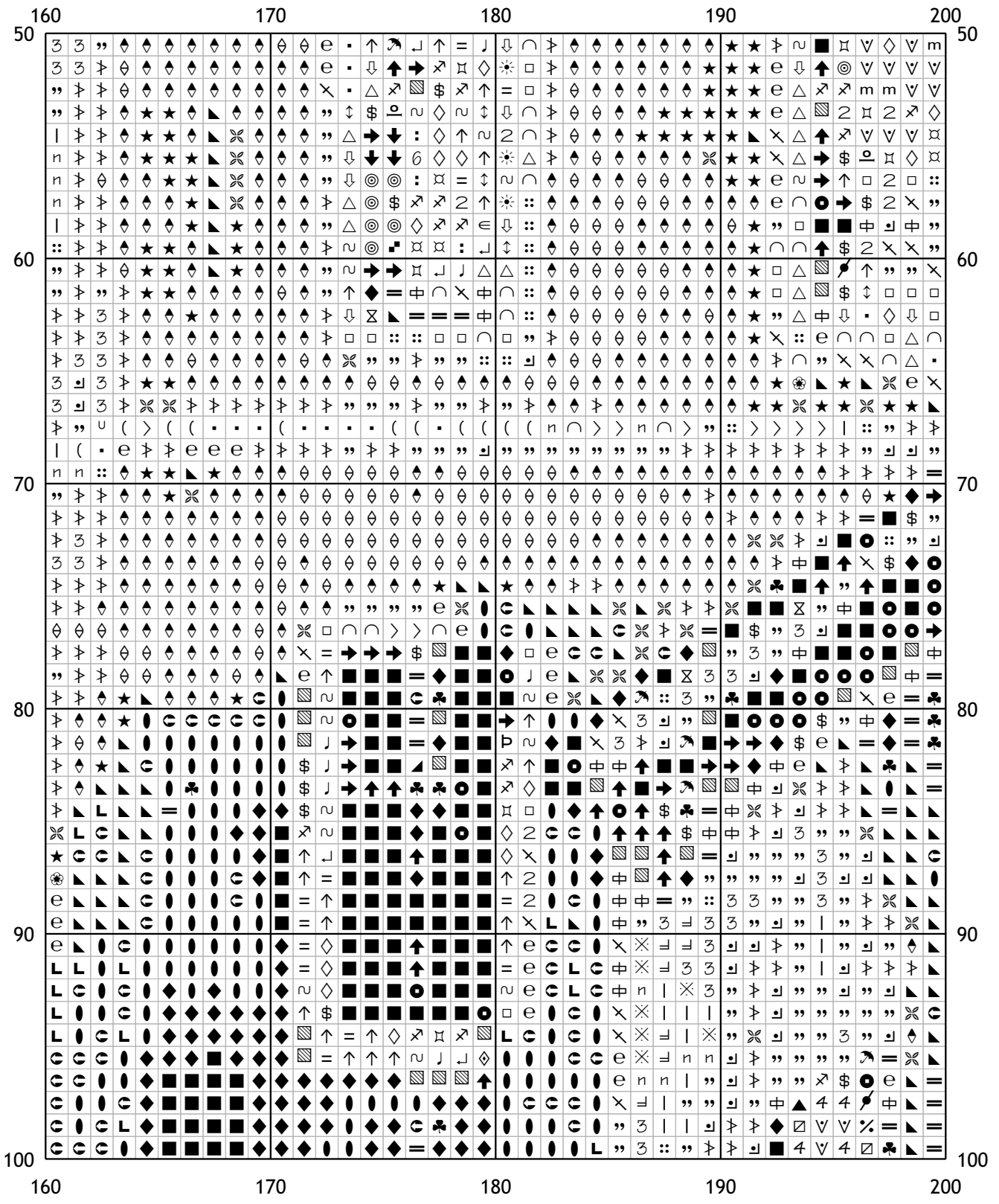


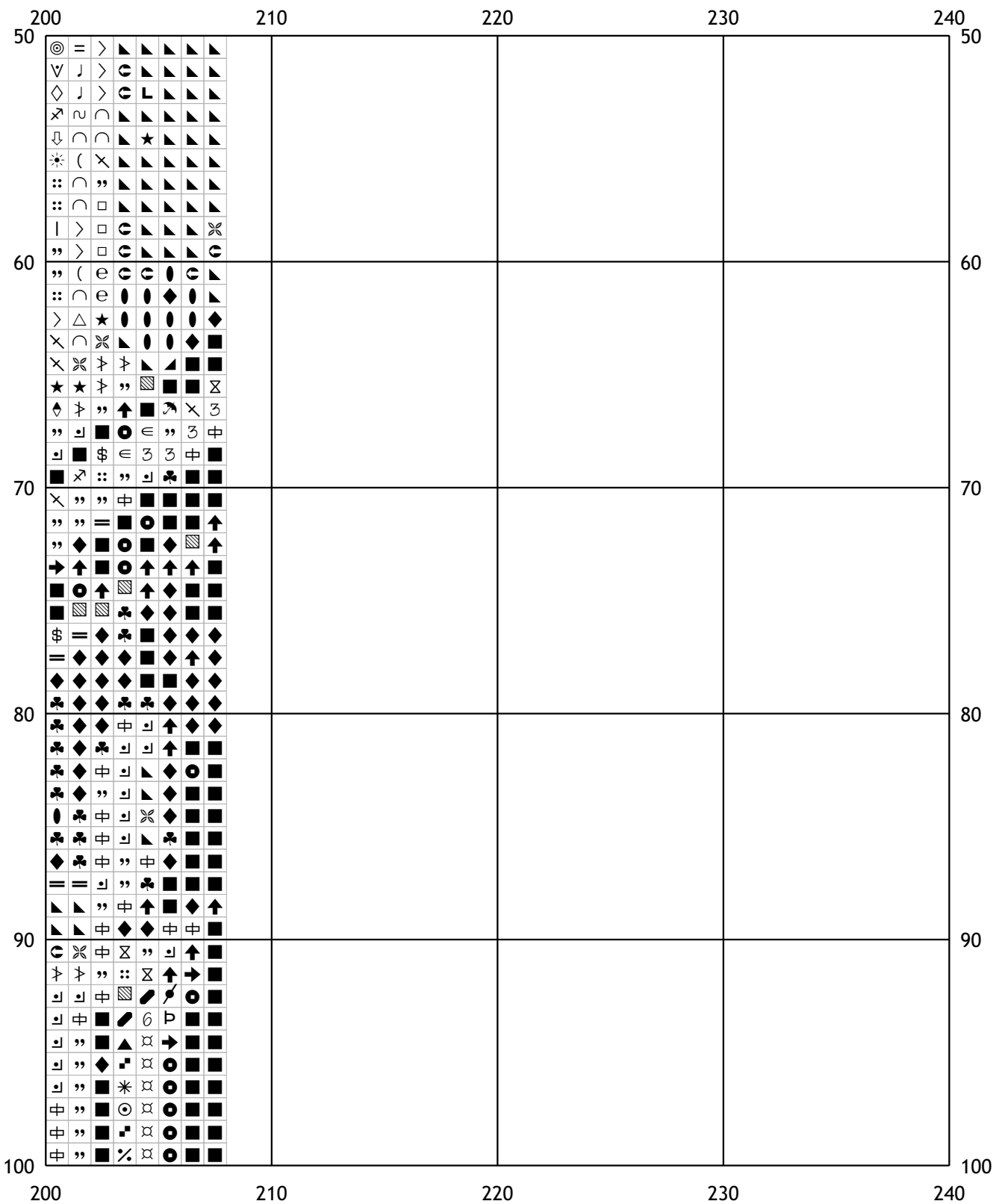


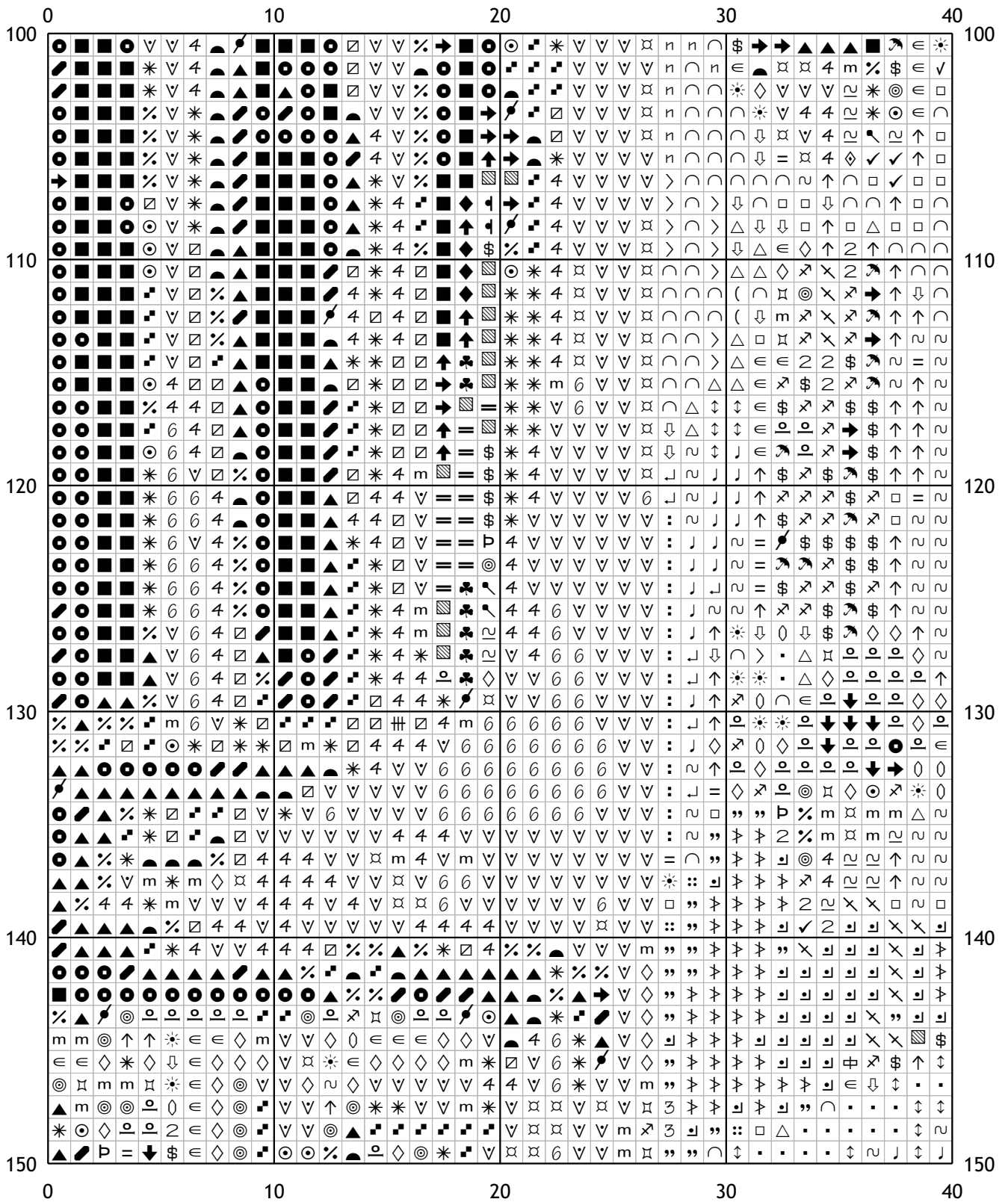
40	50	60	70	80
50				50
60				60
70				70
80				80
90				90
100				100
40	50	60	70	80

80	90	100	110	120
50	60	70	80	90
80	90	100	110	120

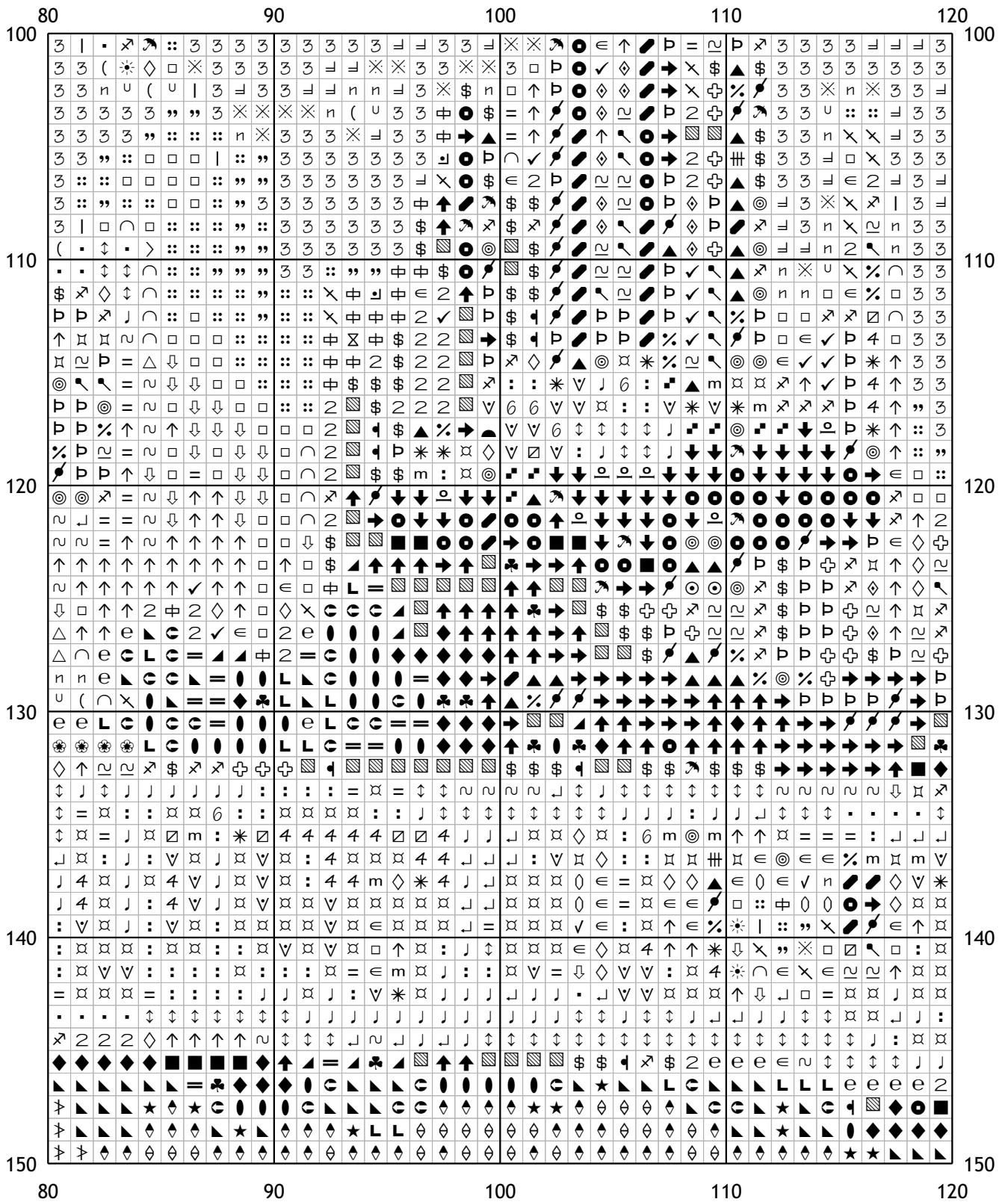


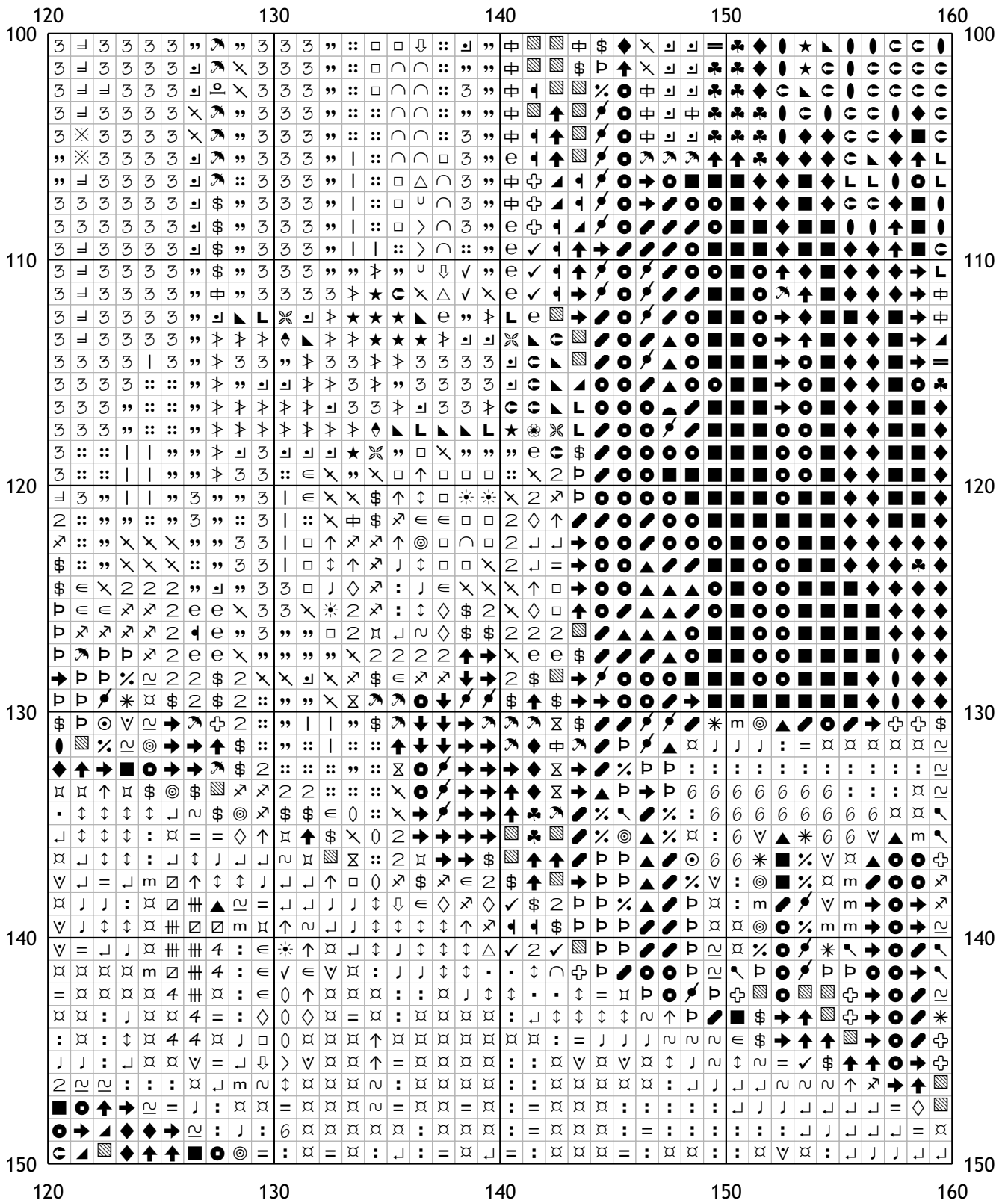


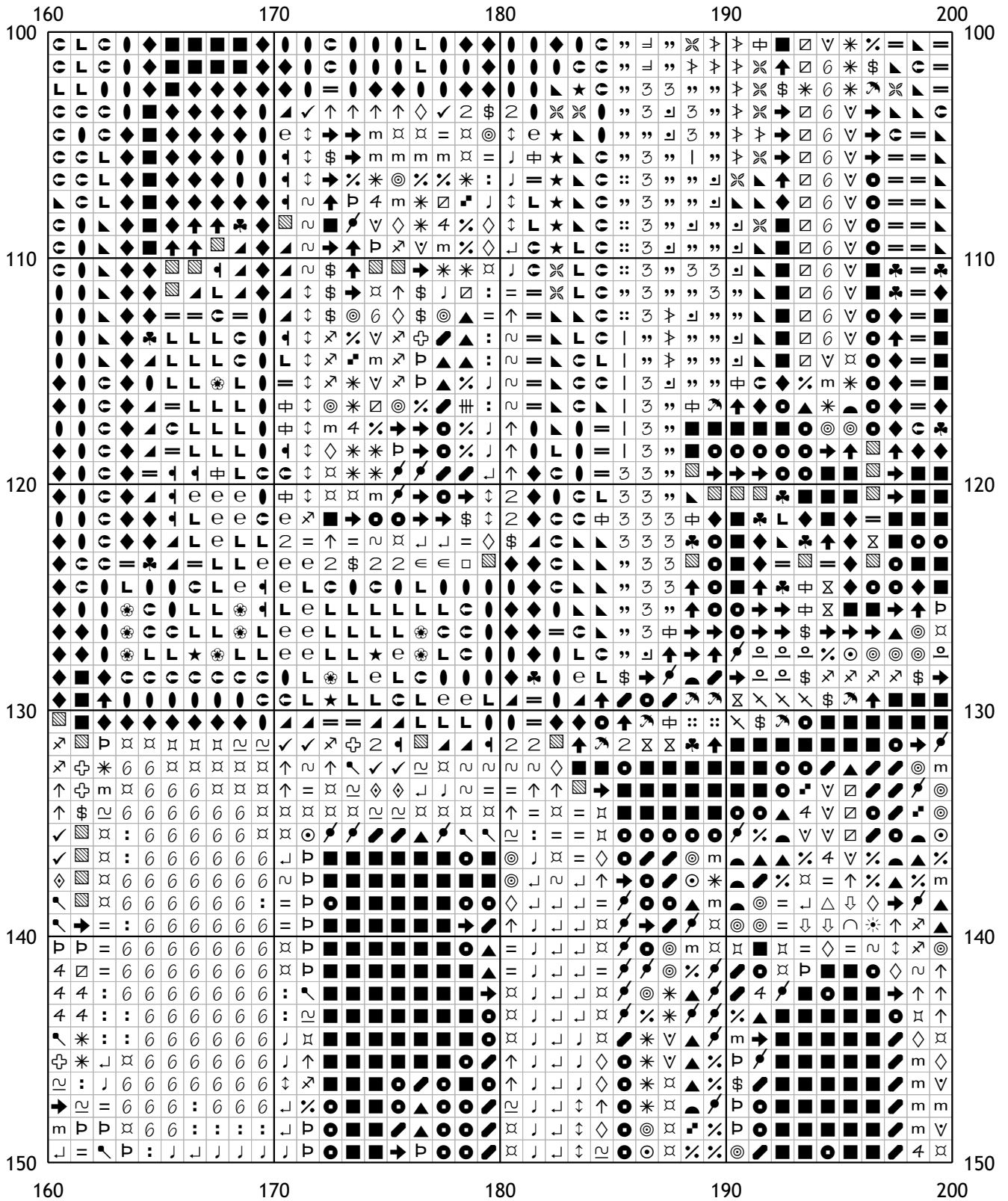


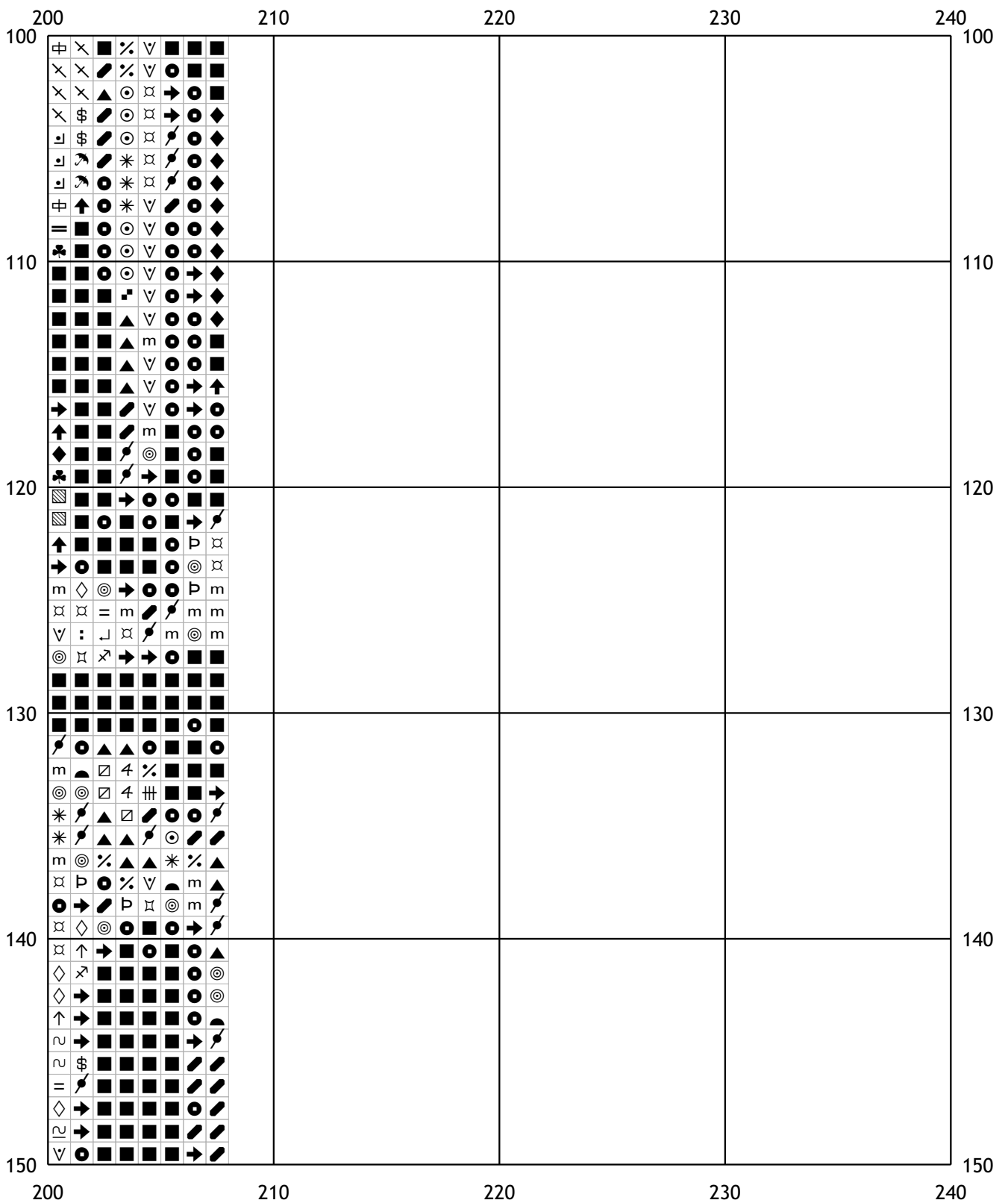


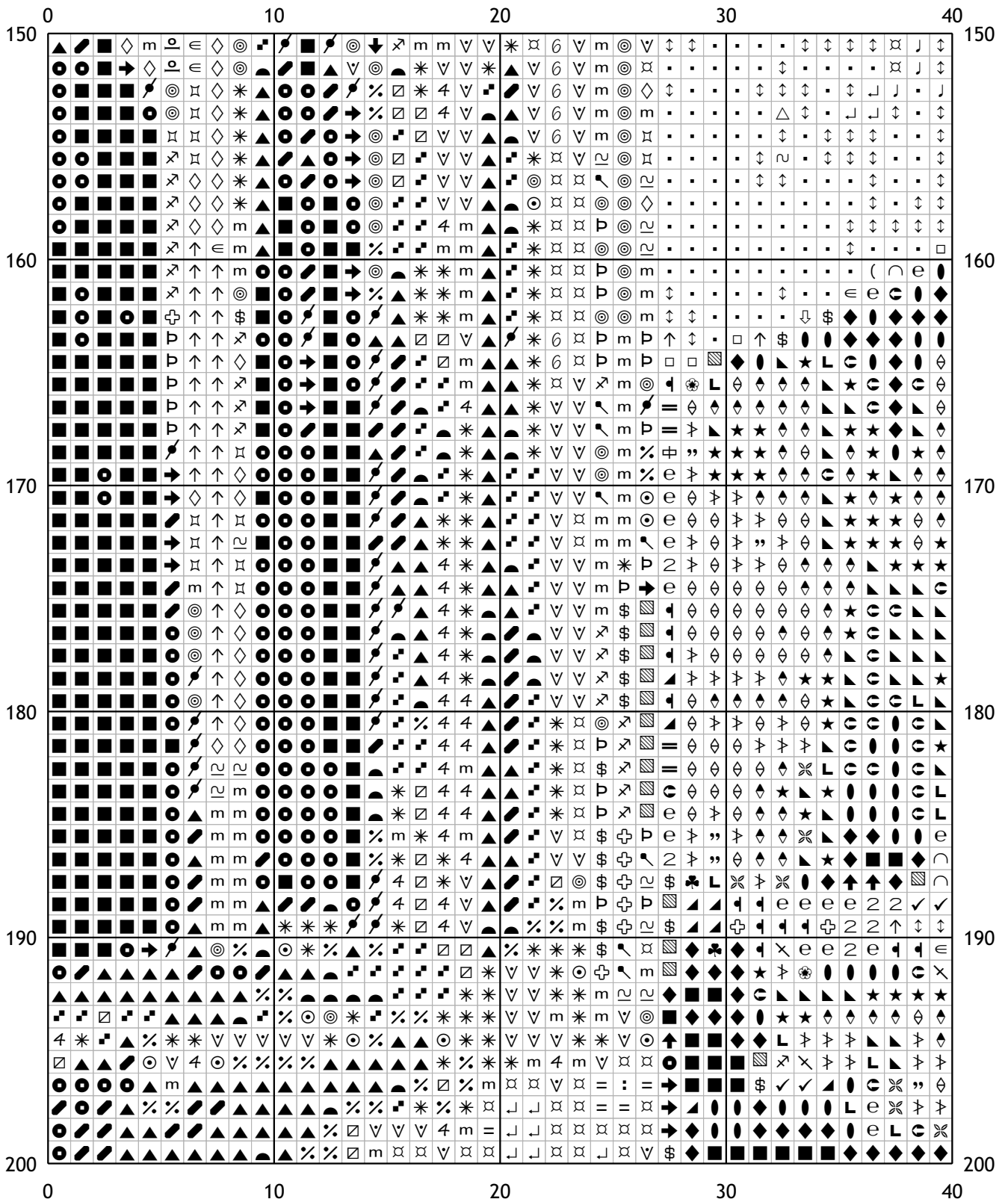
40	50	60	70	80
100	100	100	100	100
110	110	110	110	110
120	120	120	120	120
130	130	130	130	130
140	140	140	140	140
150	150	150	150	150





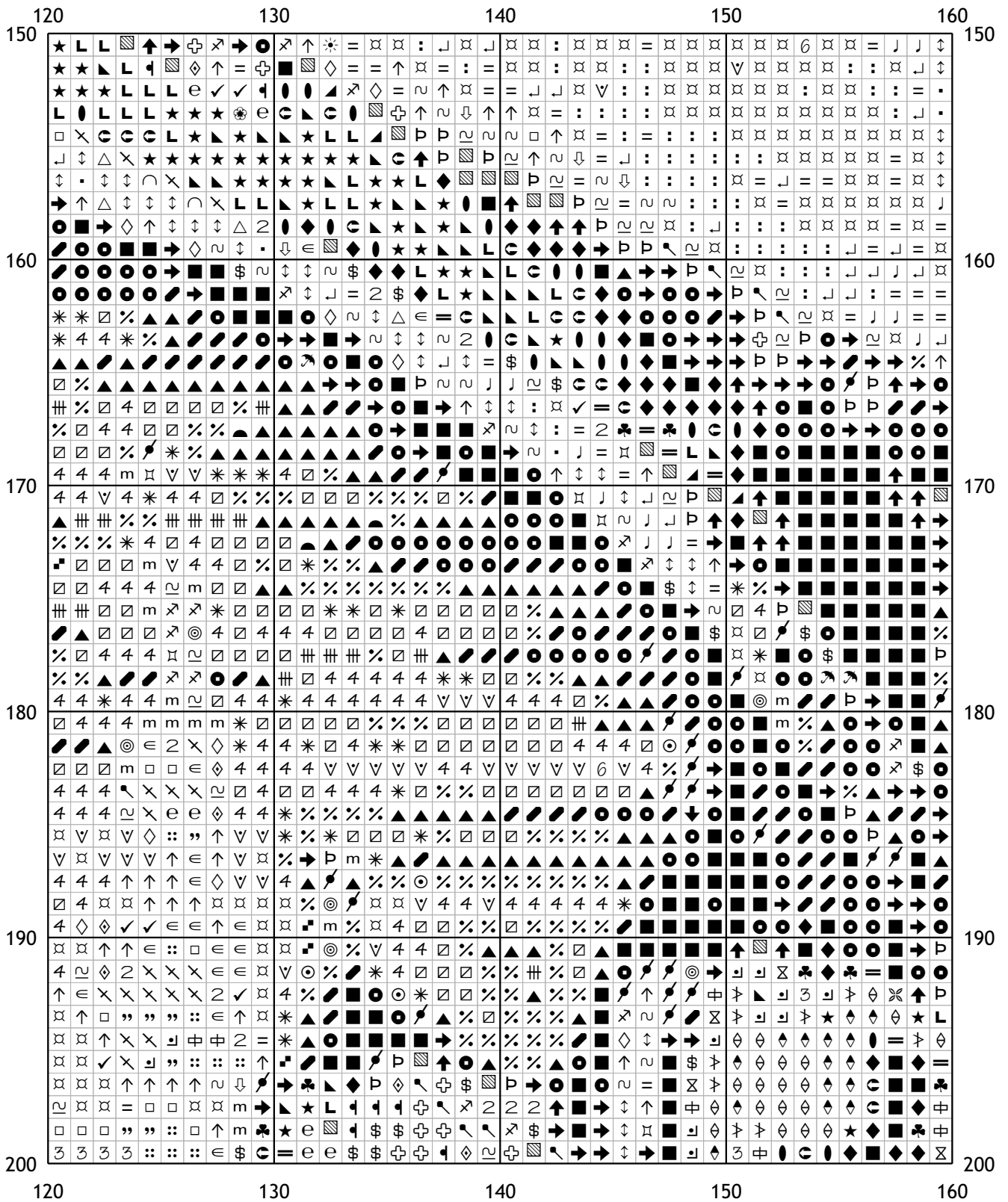


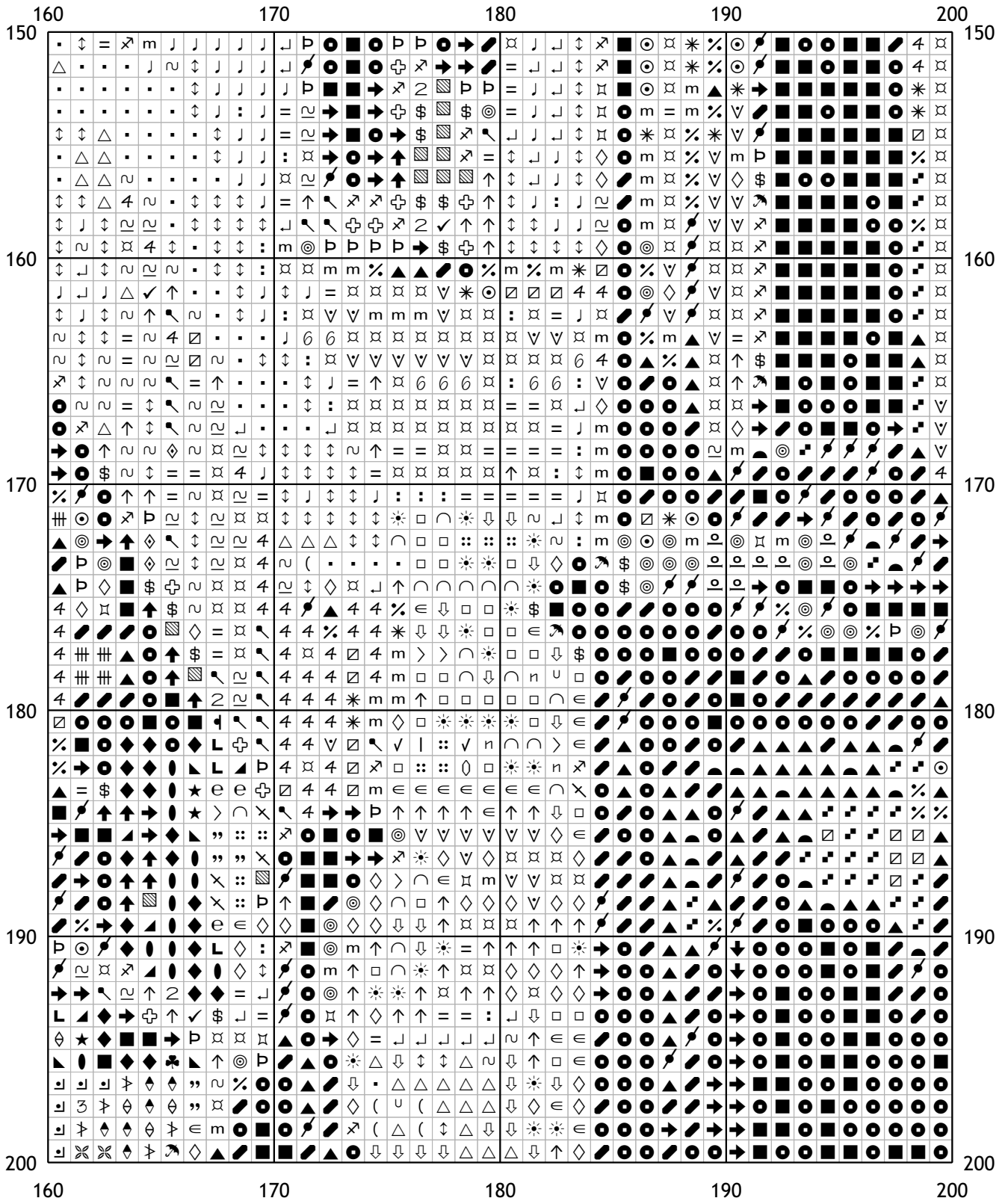


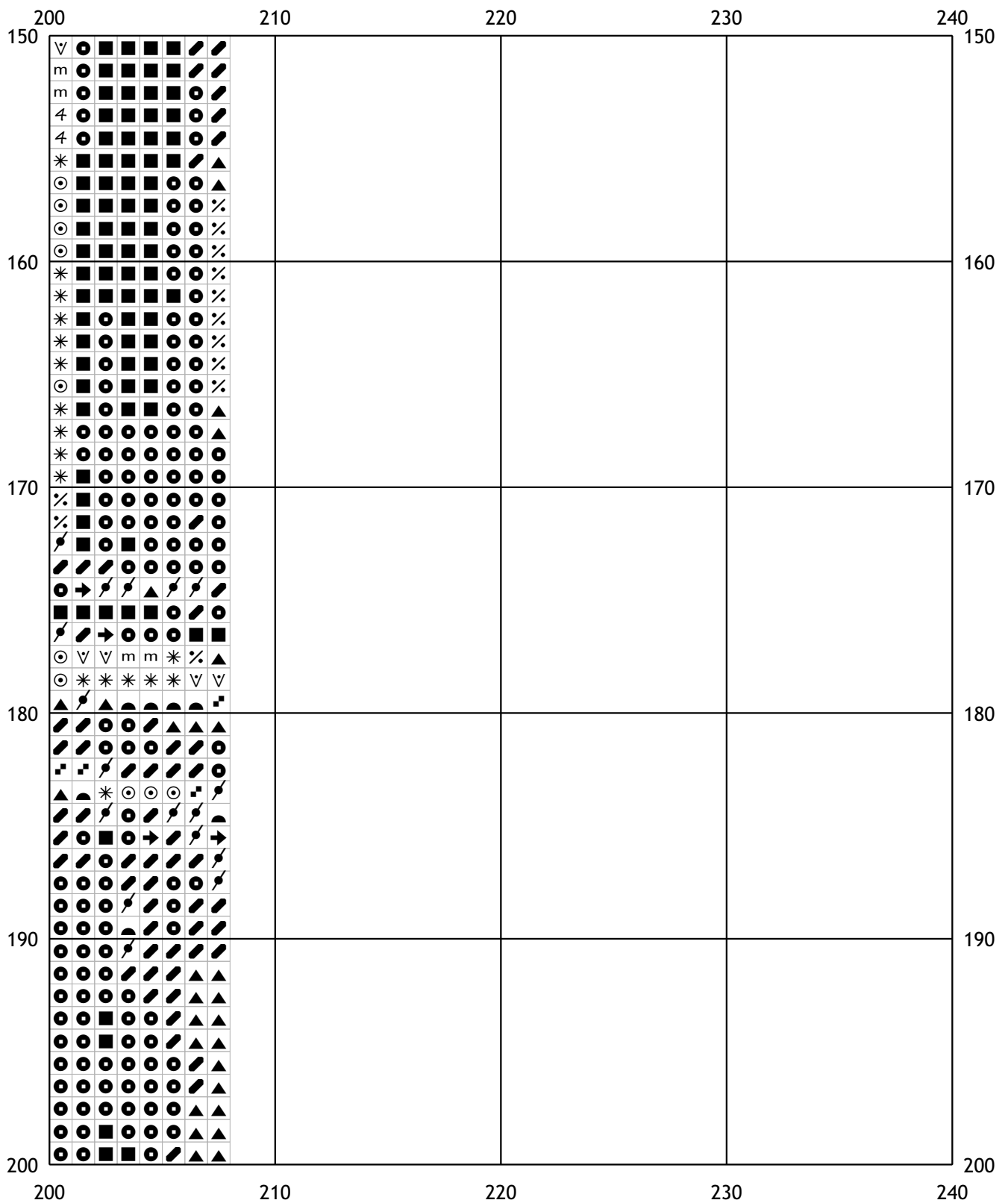


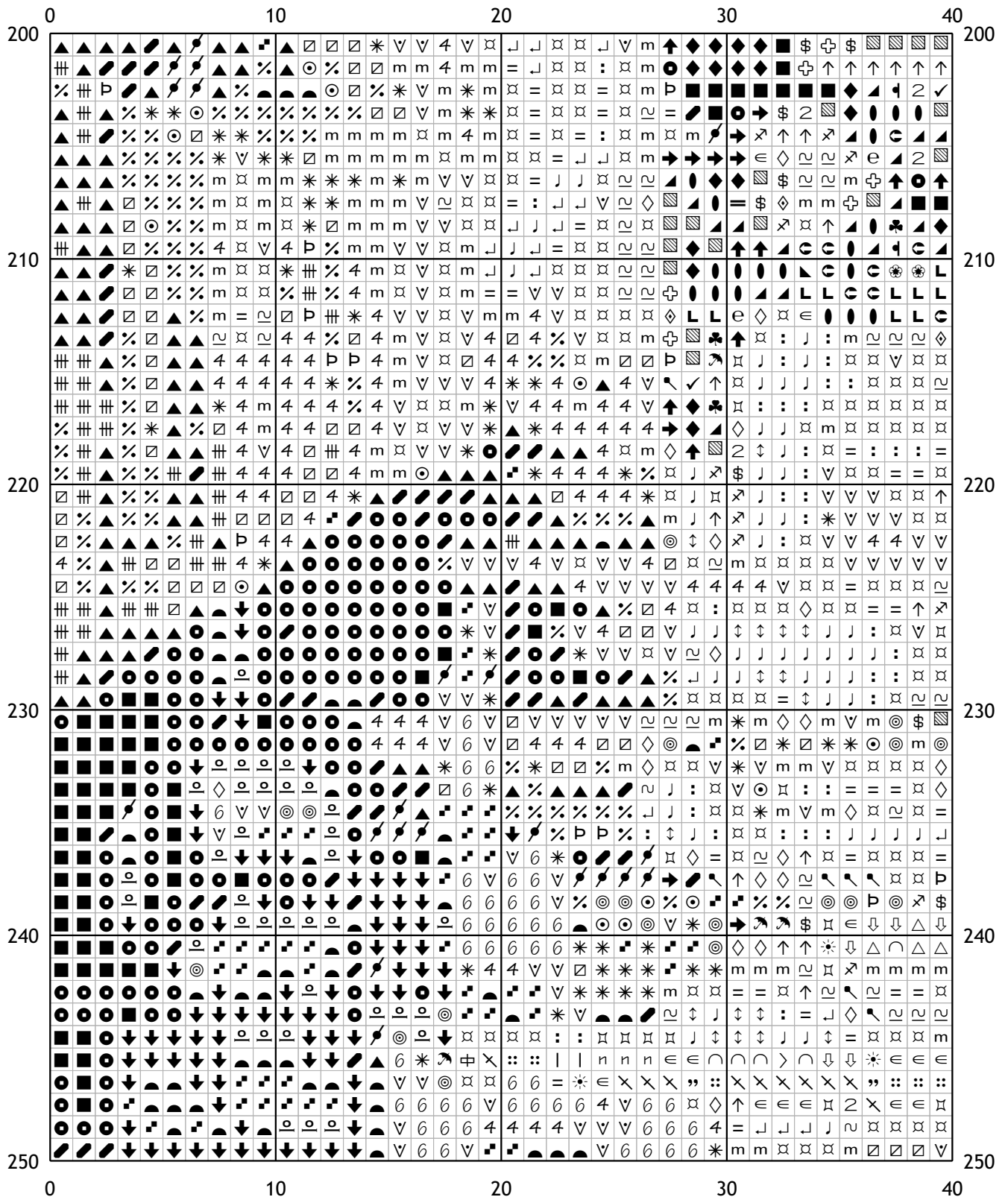


80	90	100	110	120
150				150
160				160
170				170
180				180
190				190
200				200
80	90	100	110	120









200	40	50	60	70	80	200
210	40	50	60	70	80	210
220	40	50	60	70	80	220
230	40	50	60	70	80	230
240	40	50	60	70	80	240
250	40	50	60	70	80	250

	80	90	100	110	120	
200	⬠	⬠	⬠	⬠	⬠	⬠
210	⬠	⬠	⬠	⬠	⬠	⬠
220	⬠	⬠	⬠	⬠	⬠	⬠
230	⬠	⬠	⬠	⬠	⬠	⬠
240	⬠	⬠	⬠	⬠	⬠	⬠
250	⬠	⬠	⬠	⬠	⬠	⬠
	80	90	100	110	120	

120	130	140	150	160
200				200
210				210
220				220
230				230
240				240
250				250
120	130	140	150	160

